

# Product Sheet

## Cynomolgus\_CLDN1 CHO-K1 Cell Line

Catalog number: GM-C35059

Version 3.3.1.250704

<b>Description</b>	Cynomolgus_CLDN1 CHO-K1 Cell Line is a clonal stable CHO-K1 cell line that constitutively expresses the cynomolgus CLDN1 gene, constructed using lentiviral technology.
<b>Quantity</b>	5E6 Cells per vial, 1 mL
<b>Product Format</b>	1 vial of frozen cells
<b>Shipping</b>	Shipped on dry ice
<b>Storage Conditions</b>	Liquid nitrogen immediately upon receipt
<b>Target</b>	Cynomolgus_CLDN1
<b>Gene ID/Uniprot ID</b>	A0A2K5WWF3
<b>Host Cell</b>	CHO-K1
<b>Recovery Medium</b>	F12K+10% FBS+1% P.S
<b>Growth medium</b>	F12K+10% FBS+1% P.S+4 µg/mL Puromycin
<b>Note</b>	None
<b>Freezing Medium</b>	90% FBS+10% DMSO
<b>Growth properties</b>	Adherent
<b>Growth Conditions</b>	37°C, 5% CO <sub>2</sub>
<b>Mycoplasma Testing</b>	The cell line has been screened to confirm the absence of Mycoplasma species.
<b>Safety considerations</b>	Biosafety Level 2
<b>Note</b>	It is recommended to expand the cell culture and store a minimum of 10 vials at an early passage for potential future use.

## Materials

Reagent	Manufacturer/Catalogue No.
F12K	BOSTER/PYG0036
Fetal Bovine Serum	ExCell/FSP500
Pen/Strep	Thermo/15140-122
Puromycin	Genomeditech/ <a href="#">GM-040401</a>
Anti-CLDN1 hIgG1 Reference Antibody (Lixubio)	Genomeditech/ <a href="#">GM-88096MAB</a>

## Figures

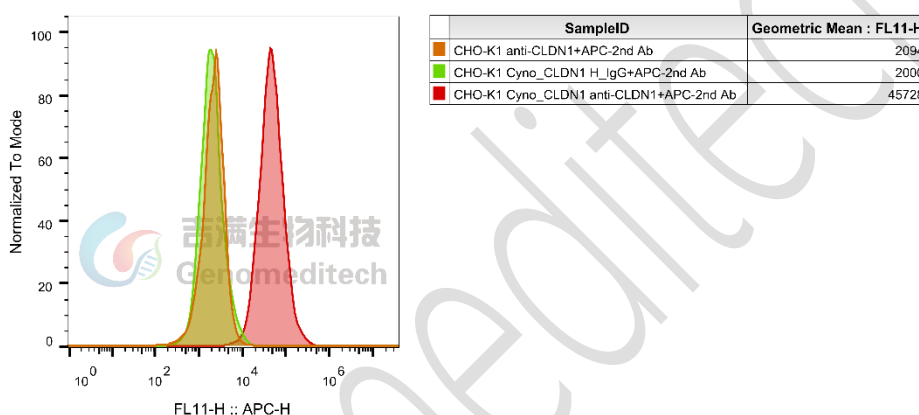


Figure 1 | Cynomolgus\_CLDN1 CHO-K1 Cell Line (Cat. GM-C35059) was determined by flow cytometry using Anti-CLDN1 hIgG1 Reference Antibody (Lixubio) (Cat. [GM-88096MAB](#)).

## Cell Recovery

Recovery Medium: F12K+10% FBS+1% P.S

To insure the highest level of viability, thaw the vial and initiate the culture as soon as possible upon receipt. If upon arrival, continued storage of the frozen culture is necessary, it should be stored in liquid nitrogen vapor phase and not at -70°C. Storage at -70°C will result in loss of viability.

- Thaw the vial by gentle agitation in a 37°C water bath. To reduce the possibility of contamination, keep the O-ring and cap out of the water. Thawing should be rapid (approximately 2 - 3 minutes).
- Remove the vial from the water bath as soon as the contents are thawed, and decontaminate by dipping in or spraying with 70% ethanol. All of the operations from this point on should be carried out under strict aseptic conditions.
- Transfer the vial contents to a centrifuge tube containing 5.0 mL complete culture medium and spin at approximately 176 x g for 5 minutes. Discard supernatant.
- Resuspend cell pellet with the recommended recovery medium. And dispense into appropriate culture dishes.

- e) Incubate the culture at 37°C in a suitable incubator. A 5% CO<sub>2</sub> in air atmosphere is recommended if using the medium described on this product sheet.

## Cell Freezing

Freezing Medium: 90% FBS+10% DMSO

- Centrifuge at 176 x g for 3 minutes to collect cells.
- Resuspend the cells in pre-cooled freezing medium and adjust the cell density to 5E6 cells/mL.
- Aliquot 1 mL into each vial.
- Place the vial in a controlled-rate freezing container and store at -80°C for at least 1 day, then transfer to liquid nitrogen as soon as possible.

## Cell passage

Growth medium: F12K+10% FBS+1% P.S+4 µg/mL Puromycin

For the first 1 to 2 passages post-resuscitation, use the recovery medium. Once the cells have stabilized, switch to a growth medium.

- Remove and discard culture medium.
- Briefly rinse the cell layer with PBS to remove all traces of serum that contains trypsin inhibitor.
- Add 1.0 mL of 0.25% (w/v) Trypsin-EDTA solution to dish and observe cells under an inverted microscope until cell layer is dispersed (usually within 2 to 3 minutes at 37°C).
- Note: To avoid clumping do not agitate the cells by hitting or shaking the flask while waiting for the cells to detach. Cells that are difficult to detach may be placed at 37°C to facilitate dispersal.
- Add 2.0 mL of growth medium to mix well and aspirate cells by gently pipetting.
- After centrifugation, resuspend the pellet and add appropriate aliquots of the cell suspension to new culture vessels.
- Incubate cultures at 37°C.

**Subcultivation Ratio: A subcultivation ratio of 1:4 - 1:5 is recommended**

**Medium Renewal: Every 2 to 3 days**

## Notes

- After the stabilization of the cell condition, there will be fewer dead cells post-passage, the cell growth rate will tend to stabilize, cell morphology will become uniform, and the cells will appear robust.

## Sequence

CLDN1 [A0A2K5WWF3](#)

MANAGLQLLGFI~~LA~~FLGWIGAI~~V~~STALPQWRI~~SY~~AGDNIVTAQAMYEG~~L~~WMSCVSQSTGQIQCKVF~~D~~SLLN  
LSSTLQATRALMVVGILLGVIAIFVATVGMKCMKCLE~~D~~DEVQKMRMAVIGGVIFLLAGLAILVATAWYGNRI  
VQEFYDPMPV~~N~~ARYEFGQALFTGWAAASLCLLGALLCCSCPRK~~T~~TSYPTPRPYK~~P~~APSSGKD~~Y~~V

## Related Products

CLDN18	
Cynomolgus_CLDN18.2-eGFP CHO-K1 Cell Line	H_CLDN18(isoform2)-eGFP 293 Cell Line
H_CLDN18.1-eGFP HEK-293 Cell Line	H_CLDN18.2 MC38 Cell Line
H_CLDN18.2 MKN45 Cell Line	H_CLDN18.2 MKN45 Cell Line(High Expression)
H_CLDN18.2 MKN45 Cell Line(Low Expression)	H_CLDN18.2 MKN45 Cell Line(Medium Expression)
H_CLDN18.2(isoform2) CHO-K1 Cell Line	H_CLDN18.2-eGFP CT-26 Cell Line
Mouse_CLDN18.2-eGFP CHO-K1 Cell Line	Rat_CLDN18.2-eGFP CHO-K1 Cell Line
Rhesus_CLDN18.2-eGFP CHO-K1 Cell Line	
Anti-CLDN18.2 hIgG1 Reference Antibody (IMAB362)	Anti-CLDN18.2 hIgG1 Antibody(LM-102)
Anti-CLDN18.2 hIgG1 Antibody(Zolbetuximab)	
CLDN3	
H_CLDN3 HEK-293 Cell Line	
Anti-CLDN3 hIgG1 Antibody(H4G3)	
CLDN4	
H_CLDN4 HEK-293 Cell Line	
Anti-CLDN4 hIgG1 Antibody(4B8)	
CLDN6	
Cynomolgus_CLDN6 CHO-K1 Cell Line	H_CLDN6 CHO-K1 Cell Line
H_CLDN6 HEK-293 Cell Line	H_CLDN6 LLC1 Cell Line
Mouse_CLDN6 CHO-K1 Cell Line	Rat_CLDN6 CHO-K1 Cell Line
Rhesus_CLDN6 CHO-K1 Cell Line	
Anti-Claudin6 hIgG1 Reference Antibody	Anti-CLDN6/9 hIgG1 Antibody
CLDN9	
H_CLDN9 CHO-K1 Cell Line	H_CLDN9-eGFP HEK-293 Cell Line
CLDN1	
Anti-CLDN1 hIgG1 Reference Antibody (Lixubio)	

## License Agreement:

**By purchasing and using this cell line product, the user voluntarily agrees to accept and abide by the following policies:**

- This cell line product is restricted to research use only and shall not be used for any commercial purposes.
- This product is strictly prohibited from being used in the diagnosis or treatment of human or animal diseases, and shall not be directly used in experiments involving humans.
- Users are not permitted to modify the cell line in any way, nor to share, distribute, sell, sublicense, or otherwise transfer the licensed materials or their progeny to other laboratories, departments, research institutes, hospitals, universities, biotechnology companies, or any other third parties, except for research activities outsourced on behalf of the licensee.

If the product is intended to be transferred to a third party, used for commercial development, preclinical or clinical drug functional validation, commercial production testing, or any other applications beyond the scope of this statement, prior written permission must be obtained from Genomeditech (Shanghai) Co.,Ltd. For details, please contact Genomeditech (Shanghai) Co.,Ltd.

Genomeditech